

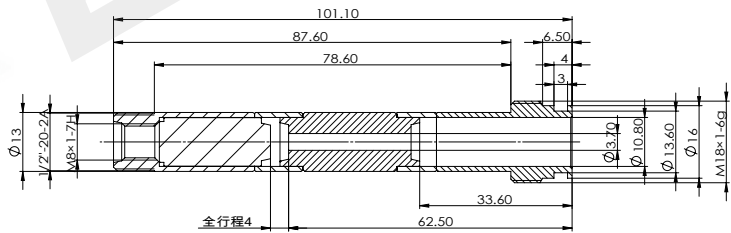
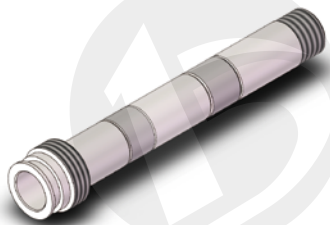
BYT10

插装阀用导磁套

Magnetic guide tube for cartridge valve

- 双向推拉式，五段氩弧焊接，螺纹连接
- Two way push-pull type, five section argon arc welding, threaded connection

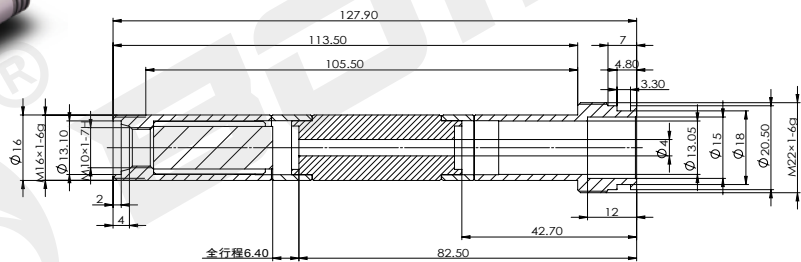
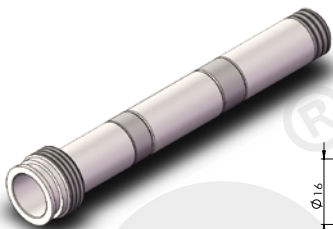
BYT10-S13-01M



技术参数 /technical parameter

工作油压 Working oil pressure	MPa	≤ 21	六角尺寸 Hexagon size	mm	—
---------------------------	-----	------	-------------------	----	---

BYT10-S16-01M



技术参数 /technical parameter

工作油压 Working oil pressure	MPa	≤ 21	六角尺寸 Hexagon size	mm	—
---------------------------	-----	------	-------------------	----	---

样本数据来源于试验室环境，仅供参考，贵公司如需最新数据或有特殊需求，欢迎联系博业液压工程师。
The sample data comes from the laboratory environment and is only for reference. If your company needs the latest data or has special needs, please contact Boye hydraulic engineer.